

Pappinbarra Community in collaboration with



Pappinbarra



C O M M U N I T Y
P L A N

December 2019

FOREWORD

ACKNOWLEDGMENT OF COUNTRY

The Pappinbarra Community-Council Action Team acknowledges the Birpai people as the traditional custodians of the lands within its local boundaries. We would like to acknowledge Elders both past and present and extend that respect to all Aboriginal and Torres Strait Islander people.



FROM THE MAYOR, PETA PINSON

I am delighted to present the Pappinbarra Community Plan, which sets out the vision, goals and priorities for improving the quality of life for the residents of Pappinbarra for the next five to ten years. This Plan reflects the community's aspirations to preserve their rural character and to protect and enhance their natural environment with particular focus on securing its significant biodiversity. The people of the Pappinbarra Valley are a self-sufficient, united community, who continuously strive to build community capacity and cohesion.

FROM THE PAPPINBARRA COMMUNITY REPRESENTATIVES OF THE COMMUNITY-COUNCIL ACTION TEAM

We embrace this opportunity to reflect our valley and its population within the Council's Community Planning framework; to preserve the things we value in nature and in the local community; to celebrate our diversity and our active commitment to volunteer causes and community initiatives; to represent and promote our singular place in the world; and to open avenues for future initiatives that might protect what we have and enhance opportunities for work and life in the Valley.



FOREWORD.....	2
WHAT IS COMMUNITY PLANNING?.....	6
COMMUNITY PLANNING PROCESS.....	8
WELCOME TO PAPPINBARRA.....	10
HISTORY OF PAPPINBARRA.....	12
COMMUNITY PROFILE.....	14
FUTURE FOCUS.....	15
ZONING.....	16
COMMUNITY VALUES.....	18
COMMUNITY VIEWS.....	20
GOALS AND ACTION PLAN.....	24
GOAL 1: WE ARE A PROUD RURAL COMMUNITY.....	26
GOAL 2: WE VALUE AND PROTECT OUR UNIQUE ENVIRONMENT AND BIODIVERSITY.....	28
GOAL 3: TO CONTINUALLY DEVELOP COMMUNITY COHESION.....	30
GOAL 4: TO LIVE IN A SAFE, VIBRANT AND WELL CONNECTED PLACE.....	32
APPENDIX A: COUNCIL'S STRATEGIES, POLICIES AND PROJECTS.....	34



OUR

VISION

The Vision for Pappinbarra was created in June - July 2019 through community input via surveys, meetings and consultations. Protection and preservation of the unique natural environment within of the Pappinbarra Valley is the highest priority for the majority of residents. Creating awareness of the substantial biodiversity of the Valley is fundamental for current residents to ensuring the future of the natural environment.

TO PRESERVE OUR RURAL CHARACTER, PROTECT AND ENHANCE OUR NATURAL ENVIRONMENT; INCLUDING ITS SIGNIFICANT BIODIVERSITY; TO EMBRACE OPPORTUNITIES FOR JOBS AND ENTERPRISES THAT ENHANCE AND SHARE THIS PRECIOUS NATURAL REALM; BUILD ON COMMUNITY COHESION; AND CONTINUE TO DEVELOP THE VALLEY AS A VIBRANT, SAFE AND CONNECTED PLACE TO LIVE.



WHAT IS COMMUNITY PLANNING?

The Port Macquarie-Hastings Local Government Area is home to vibrant towns, villages and communities, each with their unique history, character, amenities and community vision. These communities have common threads in their past, their present and in the challenges all will face in the future.

At the heart of Community Planning is a dynamic and participatory process that allows communities to have their voices heard and enables them to identify priorities and actions to achieve their vision - the responsibility of which will be shared between the community and Council.

Developed in partnership between Council and the community, the Community Plan guides Council investment for the next 5-10 years.

This Plan is a community-led blueprint, which highlights what is special or unique about the area and reflects community strengths, aspirations and vision for the future.

Ongoing community planning is seen as the key to developing a strong partnership between Council and community so that we:

- Understand what our communities value;
- Understand the issues and priorities for each community;
- Better incorporate these priorities into Council's planning framework;
- Work together to deliver the identified priorities.

The Pappinbarra Community Plan evolved out of:

- An online and postcard survey in June 2019;
- Two Council-coordinated Think Tank workshops at which community members identified and prioritised values, issues and opportunities for Pappinbarra now and in the future.

In August 2019, a Community-Council Action Team (CCAT) was formed to further develop the Community Plan and to prioritise and ensure delivery of the identified actions. The CCAT comprises representatives from the Pappinbarra Progress Association, Hollisdale Rural Fire Brigade, Pappinbarra Rural Fire Brigade, Grown and Gathered Community Market, Pappinbarra Landcarers Conservation Group and the broader community.

With thanks to: Jean Hegarty, Rick Sharp, Lisa McLeod, Adrian Guthrie, Angela Frost, Emma Frost, Stephen Neale and Andy Anderson.



Postcard Survey

Postcards delivered to every household in the community.

This is your chance to Have Your Say on what is important for the future of your area.

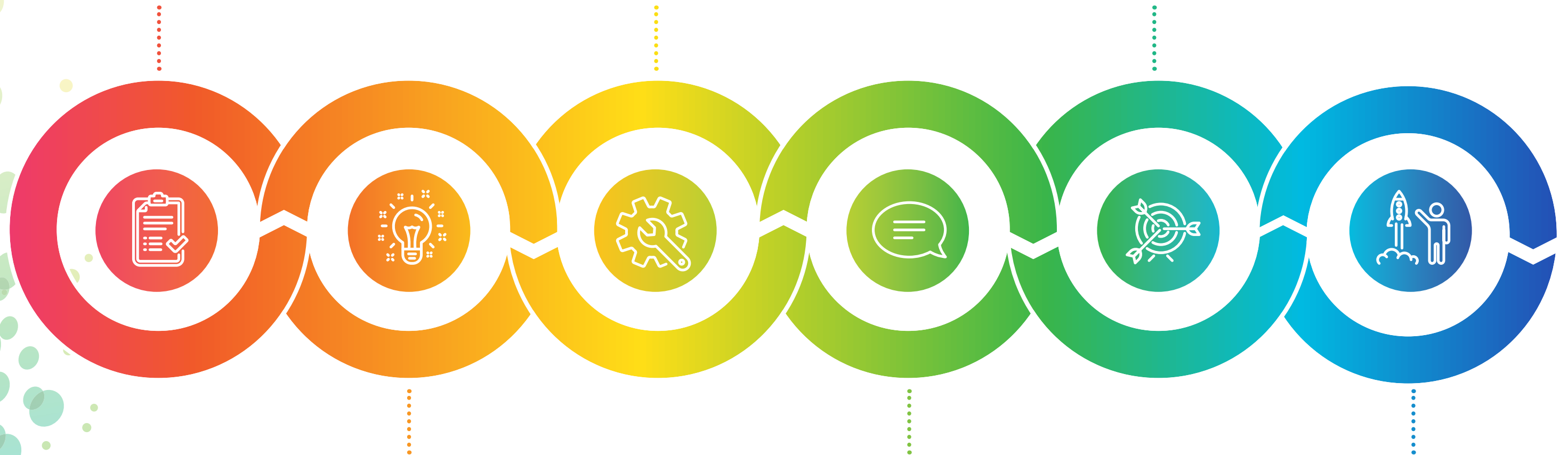
Complete the survey to send us your big ideas.

Community-Council Action Team and Development of Draft Community Plan and Action Plan

If you are passionate about your community and would like to be a part of the Community Planning process, join the Community-Council Action Team (CCAT) to develop a Community Plan specific to your area and prioritise and scope the actions identified at the Community Think Tanks.

Community Plan and Action Plan Endorsement by Council

This is the final step in making your Community Plan official by having it reported through to Council.



Community Think Tank

Council holds a series of Community Think Tanks and Pop-Up sessions.

Come along and join us to develop a vision for your community and identify key actions you would like to see delivered.

Community Consultation

This is the opportunity for the broader community to provide feedback on the draft Community and Action Plans developed by the Community-Council Action Team.

Delivery of the Action Plan

The Community Council Action Team continues to work on the delivery on the actions identified and prioritised by the community.



WELCOME TO PAPPINBARRA

The foothills and flats of Pappinbarra Valley, stretching from the Mount Boss State Forest in the west to the outskirts of Beechwood in the east, were cleared by the original landholders. This country offers tree changers and escapees from the city the opportunity to live a simpler, more sustainable life in a beautiful valley with a real sense of community. The Pappinbarra Progress Association Inc. (PPA), which exists to foster community spirit and to maintain our community-owned Hollisdale Hall, runs a 'Grown and Gathered' Market on the first Sunday of every month except January. PPA welcomes all comers to the market and our varied activities.

Trees on the mountains are predominantly eucalypts with rainforest in gullies and sheltered aspects. This habitat is home to a vast range of native species, both plant and animal; the Valley is a hotspot of biodiversity.



HISTORY OF PAPPINBARRA

Before European settlement, Aboriginal people lived here. There was a bora ground near Brombin and the Valley is part of the Birpai Nation.

Land auctioned on the (lower) Pappinbarra River in 1849 and 1851 was taken up by pioneer settlers. Land further up-river was first opened up in the 1890s. Yet further up, at and beyond the junction of the Left and Right Arms of the Pappinbarra River, land was allocated as Soldier-Settler blocks after World War I.

Early settlers made their living timber getting, and dairy farming, selling cream, raising pigs on the skim milk and sowing corn for fodder. There were 60 dairy farms along the Pappinbarra. In the 1950s, there was a switch to whole milk production.

Roads were basic, often impassable, and a source of concern to the present day. A bridge across the lower Pappinbarra was built in 1918 and wrecked in the 1968 flood. A 'temporary' low-level replacement provided access frequently interrupted by flooding until the new bridge was opened in 1975. A bridge built over the Right Arm at The Junction in the 1930s was washed away in 1953 and replaced by the present bridge in 1957. It was the policy of Hastings Shire Council to extend the bitumen on its many rural roads by one mile every year. When Council became Port Macquarie-based, this practice was discontinued.

Settlers married and had offspring; the provision of education became imperative but posed problems because of the distance children could walk or ride to school. The earliest school was built at Brombin (Mungong) in 1874. It moved to another site, then to its final one in 1906 and closed in 1965. In 1900 the Pappinbarra School was built on Bappin, 'Pappinbarra

Creek', transferred to the Hollis property, then, in 1930, to a new building at Hollisdale, where it was re-named Ellengrove School and operated until 1955. 1905 saw a school opened further up the Valley on the property now called *The Old School Yard*. It operated for 40 years. Lower Pappinbarra School was at Lyddington from 1925 to 1954. Beyond The Junction of the Right and Left Arms, Cedar Scrub (Pappinbarra Upper) School operated in the Cedar Scrub Hall from about 1925 till it, too, closed in 1966. The closures coincided, of course, with the availability of bus transport and the very gradual improvement of the road to enable safe passage to Beechwood and Wauchope!

Electricity reached the Valley late in the piece, met with pockets of resistance because of the expense, and enabled installation of milking machines.

Even prior to deregulation of the dairy industry, farmers found that grazing beef cattle on native grass and improved pastures provided a living much more easily than 365-days-a-year dairying. Now there is only one dairy farm operating in the Valley.

As in all rural areas, community spirit has been evident in Pappinbarra Valley over the years since first settlement. Although outside help is more easily obtained these days, neighbours are often the first port of call and provide valued support not only for old friends, but also for newer arrivals.

The Pappinbarra Progress Association (PPA) was formed in 1912 to agitate for improved roads and rural infrastructure. In the early 60s, after the community purchased Ellengrove School, the PPA built a hall onto the schoolroom and ran social activities there. Incorporated early this century, it exists to foster a sense of community in the Valley and to maintain our community-owned Hollisdale Hall.

From the 70s, 'Pitt Street farmers', by default, changed the Valley, purchasing large, viable properties, spending on fencing and pasture improvement as a tax incentive, then subdividing and selling to make significant profits. 'Lifestyle' blocks were bought by newcomers with often little consideration of the rigours and demands of country living, and sometimes little idea of community obligations. The wave of 'tree changers', more in tune with the environment, wanting to make a life here, and passionate about conservation, were also viewed with suspicion by old settlers, but embraced the community spirit and forged on.

The former Field Studies Centre was built by Regional Employment Development (RED) Scheme workers in 1975, renovated in 1986, given a facelift in 1996 and closed c. 2006 after schools stopped coming and insurance went through the roof.

All Saints' Church was built by the community and opened in 1931 with regular services until 1983. In 1987, Sunday school was started up, and the Anglicans and Catholics resumed monthly services about a year later.

The first fire-fighting efforts were informal and community-based. Hollisdale Rural Fire Brigade (RFB) was officially set up in the mid-1950s and the Pappinbarra RFB a couple of years later. In 2017, they were assisted by units from far afield in the catastrophic bushfires in the lower Valley. Our RFB volunteers play a vital part in firefighting both locally and further afield.



Picnic race day on John McCarthy's property at Pappinbarra in 1907.



COMMUNITY PROFILE

PLACE

CONNECTION



Home to the Birpai people for over **40,000 years**

LOCATION



The Pappinbarra Valley is located on the Mid North Coast of New South Wales, 53km west of Port Macquarie, approximately 306km from Sydney and is in the federal electorate of Lyne.

FACILITIES

Picnic areas



Tennis court



Community halls



Playground



ENVIRONMENT

Biodiversity hotspot



Riparian forest



Rainforest pockets



PEOPLE

POPULATION

Approximately

1,000

people live in the Pappinbarra Valley



DEMOGRAPHICS

The median age of people in the Pappinbarra Valley is

44

years

FAMILIES

59

2.6
people average household size

1.1

average number of children per family households

Information used has been sourced from
 • 2016 Census of Population and Housing: Australian Bureau of Statistics

FUTURE FOCUS

Preservation of the Pappinbarra Valley's unique **environment and biodiversity**

Actively respond to and take steps to mitigate the effects of **climate change** on the Valley

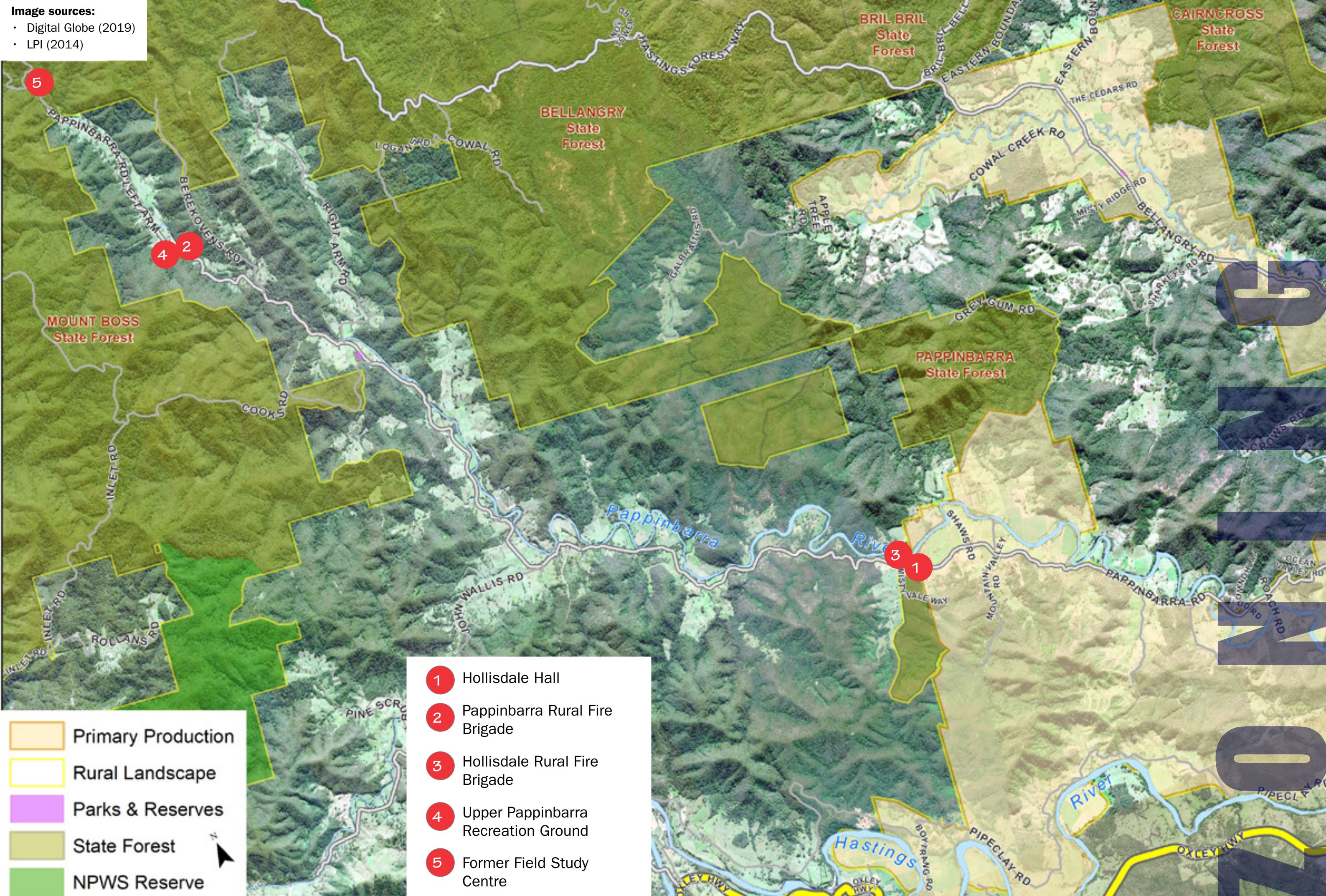
Identify Pappinbarra Valley as a **Rural Travel Destination**

To build and promote a network of **walking trails**

To promote responsible **farming and food production** in the Valley

To increase awareness and protection of the local **flora and fauna**

Image sources:
 • Digital Globe (2019)
 • LPI (2014)



- 1 Hollisdale Hall
- 2 Pappinbarra Rural Fire Brigade
- 3 Hollisdale Rural Fire Brigade
- 4 Upper Pappinbarra Recreation Ground
- 5 Former Field Study Centre



COMMUNITY VALUES

Pappinbarra is home to a diverse array of people, including descendants of early settlers in the Valley; those who came seeking alternative, more self-sufficient lifestyles; those weary of the stresses of city life; and tree-changers. All value the clear, unpolluted Pappinbarra River and its feeder streams, the fresh air and the peaceful, rural landscape of farms, smallholdings and beautiful bushland. Many regard living in a place of such amazing biodiversity a real privilege.

Like those of many relatively remote, rural areas, Pappinbarra people pride themselves on the palpable sense of community in the Valley. Newcomers are made welcome, those in need can access help and support from neighbours, and experiences are shared at community gatherings organised by the Pappinbarra Progress Association (PPA). PPA runs barbecues, bush dances, trivia nights, tennis and cricket comps, concerts, play performances, a monthly market and varied workshops in addition to maintaining our

community-owned Hollisdale hall, available for hire. Community spirit is further evidenced in PPA's monthly newsletter, *Pitchfork*, delivered to every mailbox in the Valley and available by e-mail.

Pappinbarra has its own All Saints' Anglican Church, built by the community on land donated by the Wallis family. A service open to all is held on the fourth Sunday of every month, followed by 'a cuppa off the back of the ute'.

With two Rural Fire Brigades, the Valley has a higher firefighter total per head of population than most other areas. The community appreciates the volunteers and values the work they do to keep us all safe.

Pappinbarra people are known for putting time and energy into things that matter to them, and are prominent in many organisations in the wider community.



COMMUNITY VIEWS

WHAT DO YOU LOVE ABOUT LIVING WHERE YOU DO?



The peace and quiet, the great community spirit, the wildlife and forests.



Rural lifestyle, peace and tranquillity. Friendly community. Peaceful, quiet, great community, we help each other a lot.



The natural bushland that supports wildlife habitat, some of which is endangered.



Remoteness, space, quiet.



Pappinbarra River, connected community, diverse fauna and flora.



Bush, tranquillity, community, peace and quiet.

WHAT MAKES YOU FEEL LIKE YOU BELONG TO YOUR COMMUNITY?



The newsletter - *Pitchfork*, the monthly farmers market, the community Facebook page.



Contribution and involvement in activities and helping neighbours whenever needed.



Small population is like a village where you can know people.
Pappinbarra Progress Association activities, great friends up and down the Valley and environs, excellent neighbours, cooperative work.



Participation in community activities.
Neighbours who care and help each other when necessary.



The "family" feel and co-operation and willingness to help if necessary - "neighbourliness"



Living here



Acceptance by others. Participating in working bees/communal work.



An appreciation for the special environment we are so privileged to enjoy.



Being connected to the many different networks in the Valley.

GOALS AND ACTION PLAN

The vision for the Pappinbarra region indicates that residents enjoy a close-knit and strong rural community and look to continue building this sense of place as well as actively planning for the protection and future of the unique natural environment of the area.

The goals encompassed in this vision are:

- **To maintain the character of our rural community**
- **To value and protect our natural environment and its biodiversity**
- **To continually develop community cohesion**
- **To live in a safe, vibrant and well-connected place**



The following Action Plan summarises the priorities identified for the community and were derived from community requests and subsequent considerations by the CCAT.





LOCAL
FA
GO
G

**TO MAINTAIN
THE CHARACTER
OF OUR RURAL
COMMUNITY**

OBJECTIVE 1: RURAL CHARACTER

ACTION 1.1: Promote responsible farming/food production and other rural land management activities including response to climate change

ACTION 1.2: In a partnership between local landholders and Council, develop and implement a feral animal management plan - dogs, foxes, cats, deer and rabbits

ACTION 1.3: Actively seek Council and other funding opportunities for riparian zone fencing, dam construction and off-river watering technology

ACTION 1.4: Hold workshops on small rural enterprises - beekeeping, horticulture, poultry/egg production, preserving, and woodwork/crafts

ACTION 1.5: Promotion of and acceptance by Council of flexible and alternative home building techniques including straw bale, mud brick, adobe etc.

ACTION 1.6: Advocate for Council to remove the septic tank tax on landholders



TO VALUE
AND PROTECT
OUR UNIQUE
ENVIRONMENT AND
BIODIVERSITY

OBJECTIVE 2.1: TO ACTIVELY RESPOND TO CLIMATE CHANGE

ACTION 2.1.1: Request Council develop and implement an education program on responsible water use in rural communities particularly in the increasing periods of drought due to catchment deforestation and climate change

ACTION 2.1.2: Building on the work of the Pappinbarra Landholders Conservation Group, establish a local biodiversity working group to educate the community about climate change and advocate for the local environment and the Valley's rich biodiversity

OBJECTIVE 2.2: NATURAL ENVIRONMENT AND BIODIVERSITY

ACTION 2.2.1: In partnership with local landholders and Council, develop and implement a plan for the protection and enhancement of the Pappinbarra River and its tributaries including weed management, planting and protection from cattle in the riparian zone; and water extraction management

ACTION 2.2.2: In partnership with local landholders and Council, develop and implement an invasive species/weed management action plan, including community education. Promote the use of weed management agents that are least harmful to human and environmental health and safety

ACTION 2.2.3: Encourage property owners whose land intersects with the river, to develop a 30 - 40 metre riparian zone and to revitalise adjacent land (including the removal of invasive flora) to encourage a healthy sustainable habitat

ACTION 2.2.4: Install wildlife interpretive information at the Hollisdale Hall to raise awareness of and respect for the valley's rich biodiversity

ACTION 2.2.5: Install signage on Pappinbarra Road for speed reduction to help protect wildlife

ACTION 2.2.6: For Council to allocate two free tip tickets per annum for all residents to help deter dumping or burying of waste

ACTION 2.2.7: Obtain funding for community environmental/sustainability projects - e.g. 'say no to plastic'

OBJECTIVE 2.3: TO BUILD AN IDENTITY AS A RURAL TRAVEL DESTINATION FOR FARM-STAYS, ENVIRONMENTAL EDUCATION, AND BUSH EXPERIENCES.

ACTION 2.3.1: Investigate the development of a network to encourage entrepreneurialism, local businesses and commercial opportunities in the Valley

ACTION 2.3.2: Identify Pappinbarra Valley as a rural travel destination





TO
CONTINUALLY
DEVELOP
COMMUNITY
COHESION

OBJECTIVE 3: COMMUNITY COHESION

ACTION 3.1: Prepare and submit a Development Application (DA) to Council for a commercial kitchen for Hollisdale Hall

ACTION 3.2: Actively seek funding for a commercial kitchen for Hollisdale Hall and subsequently reinstate existing kitchen as a meeting/reading room to include historic photos on the walls

ACTION 3.3: Investigate provision of a Wi-Fi hub at Hollisdale Hall

ACTION 3.4: Investigate installation of additional solar capacity for Hollisdale Hall

ACTION 3.5: Advocate for better mobile coverage throughout the Valley





TO LIVE IN A
SAFE, VIBRANT
AND WELL
CONNECTED
PLACE

OBJECTIVE 4.1: ROADS

ACTION 4.1.1: Install speed reduction signage on Pappinbarra Road to improve road safety (see also 2.2.5 above)

ACTION 4.1.2: In consultation with residents, Council undertake a Road Safety Audit of Pappinbarra Road, including black spots, school bus safety issues and use of the road by logging trucks

ACTION 4.1.3: Following the audit, take action to improve the safety of Pappinbarra Road for all users

ACTION 4.1.4: Explore the feasibility of sealing Pappinbarra Road to the Left/Right Arm junction

OBJECTIVE 4.2: FIRE READINESS

ACTION 4.2.1: In partnership between residents, the RFS and Council, develop and implement a community fire-safety plan

OBJECTIVE 4.3: TELECOMMUNICATIONS

ACTION 4.3.1: As a matter of urgency, do what needs to be done to ensure reliable telecommunications access to the residents of the Valley, especially mobile coverage

OBJECTIVE 4.4: MT BOSS TRAINING FACILITY (FORMER FIELD STUDIES CENTRE)

ACTION 4.4.1: Enable renewed community use of the former Field Studies Centre in partnership with the Mount Boss Training Facility Inc.

ACTION 4.4.2: Facilitate the use of the former Field Studies Centre by community groups with their own insurance, for ecological tours and workshops

ACTION 4.4.3: Approach owner/current leaseholder to discuss the establishment of a small natural and social history museum at the former Field Studies Centre

ACTION 4.4.4: Approach owner/current leaseholder to discuss the establishment of camping facilities at the former Field Studies Centre

OBJECTIVE 4.5: OTHER

ACTION 4.5.1: Investigate alternatives to single line power sources for residents - e.g. small solar networks



APPENDIX A: COUNCIL'S STRATEGIES, POLICIES AND PROJECTS

ENGAGEMENT & PLANNING CYCLE



A number of Council's strategic and planning documents are intrinsically linked to the development of Community Planning in the region. Some of these key documents are shown below.

PORT MACQUARIE-HASTINGS COUNCIL DOCUMENTS

Natural & Built Environment	Community Life	Leadership & Governance	Business & Industry
<ul style="list-style-type: none"> • Pedestrian Access and Mobility Management Plan (2015 & 2017) • Integrated Water Cycle Management (IWCM) Strategy (2020)² • Urban Growth Management Strategy (2017 - 2036) • Recreation Action Plan (2017 - 2025) • Local Environmental Plan (2011) • Biodiversity Strategy (2017-2030) • Development Control Plan (2013) • Draft Coastal Koala Plan of Management (2018) • Koala Recovery Strategy (2018) • Bike Plan (2015) 	<ul style="list-style-type: none"> • Cultural Plan (2018 - 2021) • Art in Public Places Policy (2002)¹ • Community Inclusion Action Plan (2019 - 2021)² • Disability Inclusion Action Plan (2017 - 2021) 	<ul style="list-style-type: none"> • Community Engagement Policy and Strategy¹ • Commercial Business Units Plans • Local Strategic Planning Statement (2020-2027)² 	<ul style="list-style-type: none"> • Economic Development Strategy (2017-2021) • Greater Port Macquarie Destination Management Plan

1 - Updated Plan under development
2 - Under development

PORT MACQUARIE-HASTINGS COUNCIL

PO Box 84
Port Macquarie
NSW Australia 2444
DX 7415

council@pmhc.nsw.gov.au
pmhc.nsw.gov.au

ABN 11 236 901 601

PORT MACQUARIE OFFICE
17 Burrawan Street,
Port Macquarie NSW 2444
Telephone (02) 6581 8111
Facsimile (02) 6581 8123

WAUCHOPE OFFICE
49 High Street,
Wauchope NSW 2446
Telephone (02) 6589 6500

LAURIETON OFFICE
9 Laurie Street,
Laurieton NSW 2443
Telephone (02) 6559 9958

