



PITCHFORK

Pappinbarra Valley Monthly News
Pappinbarra Progress Association



*Merry Christmas
and Happy New Year!*

PPA President's Report

George and I spent a very pleasant month in Ireland and Scotland with a brief foray into England. It was wonderful to catch up with family and friends, but it's great to be back in Pappinbarra. One of the things that really struck me overseas was the flocks of birds - vast numbers of crows and their allies, and seagulls of various species. Smaller birds were few and far between. The sorry fact is that these thriving bird populations are scavengers who survive on the waste discarded by humans. I leave you to conjecture about the fate of the seed- and insect-eating birds. We are fortunate in having a much less polluted environment and diverse ecosystems. I'm sure all that has an impact on our health and happiness.

Thanks to the committee for their able management during my absence and to Julie-Anne for organising the successful Home Brew night. Another grant application was lodged and plans are advanced for building the fence in front of the hall in January.

While in Ireland we were taken to see ancient ruins in Donegal. A Neolithic stone circle (circa 300BC) was sitting in a green field surrounded by grazing sheep and a Celtic cross dating from Medieval times graced the roadside. A roofless church of rough fieldstone bore witness to the faith of those who lived there 800 years ago. The Celtic footprint in Australia (and the English one too) is relatively recent, so any comparison seems a little foolish. Nevertheless, we do have religious heritage in this valley - a little fibro and timber church built by pioneers 81 years ago as a sign of their commitment to the place and their god still survives, just as surely as the Irish ruins are surviving signs of past worship and commitment to the same or other gods.

Christmas is approaching and we also have a heritage of seasonal rituals, both secular and religious. On behalf of the committee I wish you all an enjoyable and relaxing Christmas and look forward to seeing you in the coming year.

Jean Hegarty

Forthcoming Events – December & January

Pappinbarra Christmas Party – Saturday, 22 December

Everyone in the valley is invited to our Christmas party at the **Upper Pappinbarra Recreation Ground** which will go ahead as usual but now under the auspices of the Pappinbarra Progress Association.

Bring along your picnic dinner and rug or chairs for this end-of-year get together with your fellow Pappinbarra-ites – it's a great opportunity to relax and catch up with friends and neighbours from all parts of our beautiful valley. People usually start arriving about 6pm. After dinner Santa will appear with his sackful of presents for the children. If you want your child to receive something from Santa, please bring a modest present for him or her, wrapped and clearly labelled. There will be the usual tug-of-war, donut eating competition and Christmas hamper raffle. Please bring along a non-perishable item for the raffle.

Working Bee

To prepare for the Christmas party, a working bee will be held on the morning of Saturday 22nd to mow the grass, tidy things up and put up the decorations. Work gets underway about 10am so if you have some time to spare please come along and help.

Christmas at All Saints – Sunday, 23 December

All are invited to celebrate Christmas at All Saints' Church in Pappinbarra on Sunday, 23 December at 3pm, followed by afternoon tea 'off the back of the ute'. The congregation will then adjourn to Hollisdale Hall for carols and a BBQ from 5pm onwards. Anyone is welcome to join the festivities at this stage. Funds raised will go to the upkeep of the church.

New Year's Eve – Monday, 31 January

Following the success of last year's 'open mike' concert we will again be celebrating New Year's Eve at the Hollisdale Hall with a BBQ and community show. So come along on Monday, 31 January from 6.30 pm to entertain and/or be entertained! It would be great to again have residents of all ages taking part, so start rehearsing your dance, poem, play, song, instrumental item etc.

Australia Day – Saturday, 26 January

We will celebrate Australia day at Hollisdale Hall with a 'Poets' Brunch', followed by the traditional gumboot throwing, egg and spoon race and sack race. Bring a picnic brunch and celebrate our national day. 10 am start.

Meet the Neighbours—Lyn Blythe

Lyn protests: “I’m not a talker - I’m a good listener”. I assure him that as one who has lived all his life in the Pappinbarra Valley he has something to say that we will all find interesting. He grew up in the house on the town side of the Pappinbarra Bridge where Chris Ylias now lives. His father was a dairy farmer and his mother was a Heron’s Creek girl. On 13 January 1968, the old bridge across the Pappinbarra River was washed away. Lyn was on the spot. “The river came up and up and a helluva lot of rubbish was collecting the full width of the bridge. It let go on this end and just gradually swung around.” That timber bridge was replaced with the present cement one.

When Ellengrove School was still operating, “we used to have functions there. They’d unscrew the desks and put them out on the verandah. I remember one time - I was very young - and Tom Hollis got up with his five little kids hanging off him, grabbed his guitar and sang a song. We were all amazed! It’s nothing now - people get up and away they go - but he was the very first to do that in the school room.”

After the school was closed the locals bought it from the Education Department. One of the conditions of sale was that a stock-proof fence had to be maintained around it. “Two acres wasn’t very valuable back then. In 1984 we bought our two-acre



Lyn and Belle

block and house for \$42,000 and people said I was silly to pay that much.” Then the locals built the hall onto the school room.

Lyn and Cindy milked for 20 years in the now defunct brick dairy opposite the brick house on the road next door to *Clover Hills* where Mick Carle is. “All that was Jim Ylias’s. We never made any money. It was just a lot of hard work.” When asked if he missed it after retiring in 1992, Lyn said “of course I did. I missed the cows, particularly in the evenings”.

At the recent Home Brew night, Lyn carried off prizes for his lager and draught and judged the other categories. He well remembers the days when even beer was scarce. When asked if he brewed back then: “Oh hell no - but some people did. Until the brewery opened up at Grafton you could hardly buy one

bottle locally, but after that the Sydney brewers suddenly had plenty for Beechwood!”

Involved with PPA “for a long time”, Lyn quietly mows the grass at the hall and waters the trees. He’s pleased that we have “people on the committee with little ones, although they are working and have a lot to do at home”. He feels it augurs well for the future.

Jean Hegarty

PPA Calendar

We are **hoping** to have Pappinbarra calendars – featuring photographs submitted by our readers - for sale at December First Friday (providing all goes well) and available to order by phoning Jean Hegarty on 6587-6077 (price to be determined). Thanks to all who submitted photographs. Our newly returned President is racing against the clock to get this finalised – if it’s not ready for this year it certainly will be for next!

Bec & Dave Mann performance at the Hall

There was a great turnout at the Hall to experience the travelling folk-blues duo Bec and Dave Mann. The audience was filled and lubricated thanks to some excellent catering by Kelly and Jim (on his birthday!) and pre-warmed by a musical fivesome billed as local band *The Scarlet Runners*. If that really was a local outfit, it was further demonstration of the depth of talent found in our local community. However, the close resemblance of some members to Jake and Elwood Blues had at least one member of the audience wondering whether Chicago was now just up the road from Taree. Anyway, their diverse mix of outstanding musicianship and gags was thoroughly enjoyed and had the audience ready for more.

Bec and Dave delivered the desired treats ... and more again. They took to the stage like old friends returning home, and through a combination of music and stories, gave everyone a personal insight into their lives, thoughts, and experiences together on a long musical tour that began in Margaret River, WA, and luckily for us, brought them to Hollisdale Hall on what became an unforgettable night.



Regular Events December & January

First Friday

December First Friday will be held as usual on Friday, 7 December. There will be no First Friday in January. We will resume on Friday, 1 February.

Saturday Sing-Along

Our sing-along leader Elly Franchimont has hurt her voice, so the monthly sing-along has been suspended until her voice has healed. We wish Elly all the best and look forward to singing along with her in the new year.

Exercise Group

Exercise Group is suspended for December and January and will resume in February.

Yoga

The last Yoga class for 2012 will be on Saturday, 8 December. Classes will resume on Saturday, 19 January.

Grant Success

We're delighted to announce another successful grant application! PPA has been awarded a grant of \$3850 from Council to sand and seal the old school room (existing kitchen) floor and install an island bench to provide storage and a more convenient and hygienic working surface for preparing food for functions. The island bench will be constructed and installed in such a way that it can be moved into the proposed new kitchen if we are able to bring that plan to fruition – more on that in the new year. We've submitted two other grant applications, so watch this space!



Mayor Besseling and community hall representatives after receiving the grant.

January Issues of *Pitchfork*

To give the hard working *Pitchfork* team and our many contributors a break over the Christmas/New Year period we have resolved to permanently cancel the January Issue and have 11 Issues of *Pitchfork* each year. The December Issue will include notices for Regular and Special events for both December and January.

Pappinbarra Outback Association Update

The paperwork for cancellation of the Association's registration is now with Fair Trading. All debts have been paid and those who had paid their annual fees have been reimbursed. At the final meeting of the Association a resolution was passed to divide any cash assets equally between the Pappinbarra Progress Association and the Pappinbarra Rural Fire Brigade. This will happen as soon as Fair Trading cancels the registration and approves of the proposed distribution of assets. The last meeting also decided that any equipment belonging to the Association should remain at the grounds for use by the community.

The new s355 committee has been approved by Council and will oversee facility bookings, collect fees and maintain the grounds – the s355 does not organise events. Council maintains the building, provides insurance and a working budget for s355 to maintain the grounds. Current members approved by council are Sue Frost, Rob Frost, Kelly Benson, Steve Ostler, Brenda Patrick and Emma Frost. If anyone else is interested in volunteering for the s355 committee please phone Sue Frost 6587 6129.

Council has recently replaced the electricity pole which supports one of the lights for the tennis court. I feel that this indicates that Council is keen for the grounds to continue to be open and used by the public. The holes which had appeared in the new surface of the tennis court have also been mended. Doug, from KCL Sports, did a great job in patching the court, which suffers from the lack of a good foundation.

The grounds and tennis court are available for private hire at \$5 per hour for not-for-profit and \$10 for commercial users. For bookings please phone Sue Frost 6587-6129.

Sue Frost, Acting s355 President

Special Invitation to POA Members to Join PPA

With the wrapping up of the POA we hope that the great community spirit that has sustained that Association for so many years will continue. That spirit saw the development of the facilities in Upper Pappinbarra for the whole community to enjoy. We hope it will now enrich the activities and spirit of the PPA representing all the residents of this wonderful Valley. To this end we extend a very warm invitation to POA members to join the PPA and help us continue the tradition of events across the Valley.

High Quality
Hay & Silage
Taree
Hay - small squares
Suitable for cattle & horses
J.F. & L.R.
Longworth & Sons
Peter 0438 950 900

www.bellrowanvalley.com.au

Daily trail rides
and treks: **Overnight packages**
2 & 3 day trek
Pub Ride - 2 days
Beginners to experienced riders welcome
Bookings essential
6587 5227

WAUCHOPE
Upholstery
Lounge, dining cushion covers
and recliners
Recovered and Repaired

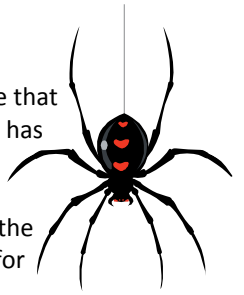
For the best
seat in the
house

6585 6700
Fax: 6585 6798
Free quotes

call an
Angel
House & garden maintenance
By women who care
Call Jan & Mary
6587 6055

Spider Project - Opening Celebrations at the Glasshouse

Thanks to everyone who donated old toys or precious time to the Spider Project, a One Off Makery initiative that harnessed local skills to make a giant creature entirely out of salvaged materials. Our Orb-weaving Spider has taken gangly, furry shape, and in December we move into the Glasshouse Studio for the final touches. You can see the finished creature in its hand-spun web looming over the Glasshouse foyer as part of Summerfest 2013, from the 5th to the 22nd of January. All are welcome to join us at the Glasshouse on the morning of Saturday, 5 January for kids' activities and opening celebrations. Check with the Glasshouse for details.



Bryony Anderson

Bird of the Month—Noisy Pitta

Common name: Noisy Pitta

Scientific name: *Pitta versicolor*

Other names: Anvil Bird or Jewel Thrush

Size: 17 – 20 cm.

Status: Secure

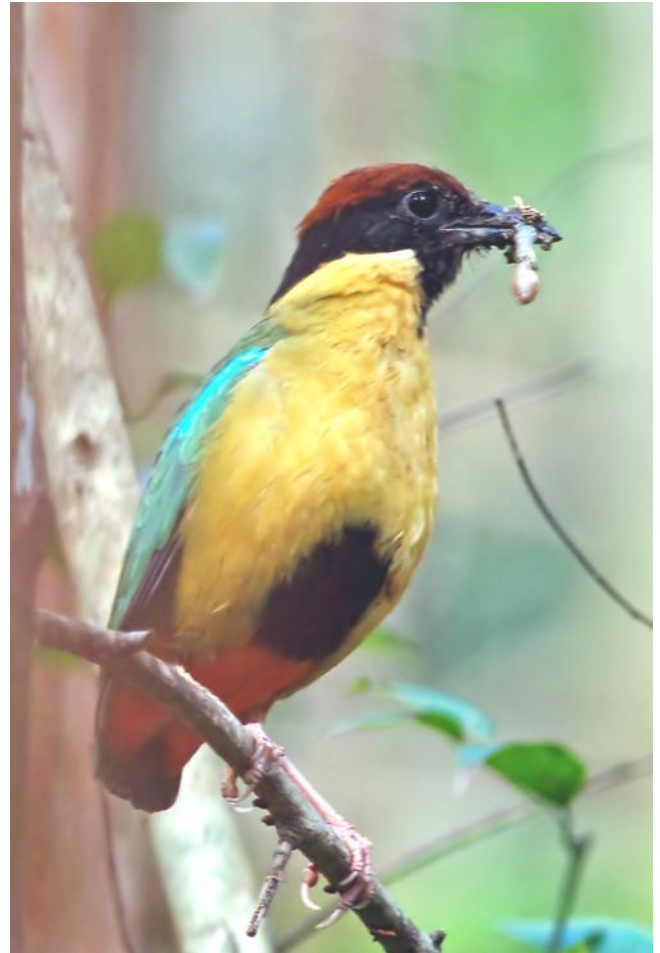
The Noisy Pitta is multicoloured having a buff coloured breast from chest to legs with a black blotch in the lower belly. The black head has a chestnut 'crown' circling it. The back is green with turquoise shoulder stripes and rump. The vent area is red in males or a deep pink in females. Juveniles have a greyish throat and a duller green back with no turquoise stripes.

Their voice is a loud and penetrating whistle given mainly during the breeding season. The advertising call resembles the sound "walk to work". Another call, a single "keeow" is heard during breeding.

Usually occurring as solitary pairs, they inhabit rainforest and adjoining scrub along the East Coast of Australia from Cape York to about Newcastle, NSW. There is some altitudinal movement, the birds descending from higher areas during winter. Despite their colourful plumage they are difficult to observe, their presence being revealed by their repeated calls during the breeding season. The Noisy Pitta forages for food on the forest floor and eats insects, worms and snails. The snails are broken open by repeatedly bashing them against a suitable rock or 'anvil', giving rise to its nickname, Anvil Bird.

Breeding occurs between October and February when a domed nest is constructed of sticks and leaves, bound with thin grasses and lined with moss and lichen. The side entrance often has a pathway of sticks and debris. Three to four eggs are laid with incubation and rearing of the young shared by both adults. The nest is commonly built on or near the ground amongst buttressed roots on the down-hill side of a tree.

For further information or questions related to this or other species contact can be made through this email address peter_fac@yahoo.com.au (that's peter_fac). Season's greetings to all.



Noisy Pitta

Peter Fackender

Hastings Kitchen Co.
Pty Ltd.
Lic. no. 96036C
202 High St
Wauchope
Kevin
Hughson
Mob: 0407 397 421
☎: 6586 4545
hastingskitchens@tsn.cc

Beechwood Post Office
Emma & Eric
are
"Here to Please"
Postage/parcel services
Bill payments
Wine sales
ph/fax: 6585 6109
Mon-Fri: 8:30am - 6pm
Sat & Sun: 9am - 12pm

Bella Bago Choir
invites you to come and sing
Mondays 6-8pm,
Wauchope Arts Hall,
Bain Park, Wauchope
No experience necessary - just a
passion for singing and a
willingness to learn.
Elly Franchimont: 6587 6097 or
0424 220 937
elly@vocalpointevents.com

Alex Irving Solicitor
Conveyancing,
wills, estates,
injury claims
Cowal Creek Rd, Bellangry 2446
Tel: 6587 5112
Fax: 6587 5113
irvingsolicitor@hamboursat.com.au

Plant of the Month - Ochna/Mickey Mouse Plant (*Ochna serrulata*) OCHNACEAE

Ochna is a woody shrub, usually to a maximum height of about 3 metres, but occasionally taller. It has rather smooth and very thin bark and a tenacious tap-root somewhat like an S-bend. It is at this bend (just below ground surface) that the stem can break if hand-pulling of the plant is attempted. Ochna was once a very fashionable garden plant suitable for hedging or as a stand-alone feature. Its showy yellow flowers hang pendulously and are followed by red sepals that reflex upward, beneath which are the 5 berry-like fruits that ripen from green to black. Although the plant has largely fallen out of vogue with gardeners, the birds still love it and it's by this means that the plant can rapidly spread over a wide range. The seeds that fall from the plant to the ground below also can germinate *en mass* into a carpet of seedlings, and riparian systems are particularly vulnerable areas of infection due to disturbance effects and long-range movement of seed in water. Dense infestations can form near-impenetrable thickets, and this - combined with the technical difficulty of control - make management costs per area very high. It is unlikely to ever be a weed of actively-managed pasture, but Ochna will quickly and readily invade unmanaged pastures, fencelines, riparian areas, hardwood forests and rainforests. If you have Ochna on your property, I strongly urge you to control and remove all plants and



Source: Friends of Lane Cove National Park

talk with your neighbours about new infestations which may already be establishing. For technical assistance on control, please contact the agencies below or feel free to call me on 6587-6022.

Peter Michael

FURTHER INFORMATION - Port Macquarie-Hastings Council (Noxious Weeds Officer) 6581 8111; **NSW Dept. of Primary Industries** www.dpi.nsw.gov.au or 1800 808 095; **Weeds Australia website** www.weeds.org.au.

Feel free to drop any plant ID specimens in my mailbox (sealed plastic bag please) (2011 Pappinbarra Rd) with your details and I'll get back to you.



Source: SydneyWeeds.org.au

Fireweed - A Best Management Guide for Australian Landholders. Available free from the Hastings Landcare Office, 44a Cameron Street, Wauchope.

In the Vegie Patch this Month

Still time to do another planting of tomato, cucumber, zucchini, squash, beetroot & beans. Why not try growing your own peanuts? They are available in a 100 mm pot. The peanut is a annual belonging to the Pea family. The plant produces small clusters of yellow pea-like flowers, which grow on stems called pegs. These pegs grow down and push into the soil, and the nuts develop under ground from the pegs. Peanuts take about four months to harvest.



Alison Robinson, Greenbourne Nursery

ecoWild!
health food · organics · products from nature
organic fruit & veg
bulk flour, grain, rice, nuts
dairy, cosmetics, vitamins
groceries, bedding
dedicated to healthy living
Mon-Fri: 9am - 5pm Bransdon St
Sat: 9am - 12:30pm Wauchope
Sun: by appointment **65852424**

Hastings Co-op
Mitre 10 & CRT
♦ Hardware ♦ Farm supplies
♦ Animal feed ♦ Pool supplies
♦ Pump & irrigation & lots more!
Pappinbarra deliveries every Friday right to your door!
Ph: 6585 1655 1 Carrington St
Open Mon-Fri 8am - 5pm. Wauchope
Sat 8am - 12pm, Sun 9am - 1pm.

travelworld
Wauchope
Canada and Alaska
group tour escorted by
James and Robyn Flanagan
Expressions of interest:
6585 2288
21 days
May 2013

Beechwood General Store & Café

Your convenience store & café
Trading hours:
8am - 6pm 7 days
groceries, local produce and more!
CAFÉ OPEN DAILY
Breakfast, Lunch & Snacks
Dine in (BYO) or Take-Away
Group bookings and A/H functions
Phone Wendy on 6585 6130

RFS News

The recent rain experienced across many parts of New South Wales has been welcome – but it's also brought an unwelcome threat for many people. The rain has led to increased grass growth across many areas and as this grass begins to dry out, there's an increased risk of grass fires. Grass fires can be especially dangerous because they can start quickly and spread rapidly, catching people off-guard. They can produce large amounts of heat which can kill anyone caught out in the open.

Preparing for grass fires

There are things you can do now to protect yourself from grass fires. Having well maintained firebreaks mowed, ploughed, slashed or even grazed along fence lines and/or around your home, shed and storage areas can slow a fire's spread. Make sure you've got water for fire fighting, in case a fire is on your property. Have water tanks filled and connected to a pump - have a diesel pump as electric pumps won't work during a fire if the power goes out. Store things like fuel and firewood well away from your house. Check the access to your property - ensure cattle grids or bridges can hold the weight of a fire truck.

Fires Caused by Use of Machinery

Machinery such as tractors, slashers, harvesters, welders, chainsaws and grinders can start grass fires. To help reduce the risk of machinery fires starting or spreading:

- Check the machinery is free from any faults and mechanical defects which could start a fire;
- Ensure it is fitted with an approved spark arrestor;
- Carry a working water fire extinguisher or knapsack;
- Limit the use of equipment during hot, dry and windy conditions - *slashers* shouldn't be used unless conditions are mild or are accompanied by an independent means of suppressing a fire; *grinders* shouldn't be used unless conditions are mild or the surrounding area is dampened down to prevent an ignition.

Bush Fire Survival Plan

All of us should have in place a "bush fire survival plan". Having one of these is the best way to help improve the safety of you and your family before or during a fire. Your plan can help stop you from making rushed and dangerous decisions at the last moment. Here is a link to help you create one for your family and assets: http://www.rfs.nsw.gov.au/file_system/attachments/Attachment_BushFireSurvivalPlan.pdf

Take care out there – we're all depending on you.

Damian Privett

Fire Permit Officers:- Upper Pappinbarra: Steve Ostler 6587-6090, Bob Ostler 6587-6180, Anthony Wall 6587-6127 or Andrew Jarrett 6587-6181; Hollisdale and Lower Pappinbarra: Lyn Blythe 6587-6186; Beechwood: Sam Elphick 0428-856-222.

Fire Permits to burn off **are required** until further notice.

Permits are valid for 7 days only.

Prior to a burn you are required to give your neighbours 24 hours notice in advance.

IN CASE OF FIRE – CALL 000

Hastings Farmers' Market

The **Christmas** Hastings Farmers' Market will be held on the 4th Saturday of the month – 22 December – a couple of days before Christmas. This is just in time to buy freshly harvested produce for the Christmas feast. At the market you're also sure to find that last minute Christmas present you're still looking for. There will be some lovely hand-made gifts and value-added produce created by someone in your own community. The market is on **rain or shine at the Wauchope Showground from 8 am to 12 noon**.

Letterbox competition

Encouragement prizes for the letterbox competition will be announced at the next First Friday (December 7). There will be a prize for the most improved, the most creative and the most functional letterbox.

Darren Rowley Electrics



- *New Homes
- *Rewiring
- *Mini-excavation
- *Cable Locating
- *Underground Cabling

For all your electrical needs
Ph: 6587 6076 or
0418 435 189

Export Quality Paspalum Seed

Direct from grower/processor

25 kg bags - \$8/kg + GST

Dave: 0417 073 187
J.F. & L.R. Longworth & Sons, Coopernook

Hastings Farmers' Market
the **4th Saturday** of each month



Wauchope Showground
8am - 12 noon rain, hail or shine
Enquiries: phone 6587 6097, 0424 220 937 or email elly@vocalpointevents.com



**Buy fresh
Buy best
Buy local**



Large range of **trees, shrubs & fruit trees**
Wide range of **seedlings**
Pots & giftware

NURSERY WAUCHOPE see us on thebusinessstree.com.au

239 High St. Wauchope
(opposite Timbertown)
Open 7 Days 65852117
Hayden & Alison Robinson
greenbourne.nursery@midcoast.com.au

Days Gone By

"Growing up in the 1950's in sleepy Beechwood was, for Barry Miller, an idyllic childhood. Barry, now in his 60s, arrived in Beechwood at about the age of six when his father came to work "in the bush". Barry and his family lived on Beechwood Rd. "In those days", recalls Barry "there were only a handful of houses and families in Beechwood. A dirt road led into the village which consisted of a pub, a post office, a blacksmith, a bakehouse and Carney's butcher shop (currently a hair salon). There were four service stations, one at the still-existing Beechwood corner shop, one at the blacksmith's, one outside the post office and one at the Catholic Church. The bakehouse was owned by a lovely lady called Moni Carroll who lived on the premises". Barry remembers going to buy "big, tank loaves of bread" at fivepence each and says that all the local kids loved the bakehouse because Moni would allow them to stay in there on freezing cold days.

Moni employed a baker who always had a "big cigarette hanging off his lip" with the ash often finding its way into the loaves. Beechwood in the 1950s consisted mainly of dairy farms. Twice daily a milk lorry rattled along the dirt road collecting the cans of milk for pasteurisation at the Co-op. There was also Beechwood Mill where the local kids were allowed to use the facilities to have a hot shower once the workers had all left for the day. A typical Beechwood house in the early 1950s had only cold water and a woodfire stove for cooking. 'Spot' Lullham who built the house at 691 Beechwood Road had the only phone in the village which the villagers borrowed if they needed to make a call. The telephone exchange was situated at Pembroke, with a train station, mail exchange and large post office further up the line at Telegraph Point.

Cathy Bennetts

Hastings Co-op Department Store Shareholder's Day

The Hastings Co-op is celebrating its grand Department Store Shareholder's Day on **Friday, 7 & Saturday, 8 December** from 8.30am. Along with a HUGE sale of up to 50% off across the store there will also be lots of community entertainment and involvement. This includes Christmas fun and frolics by **Wauchope & Port Macquarie Performing Arts** (including elves and Santa photo opportunities); handmade wooden toys by the **Hastings Wood Workers Guild**; and **Sing Australia** carollers in High Street on 8 & 22 December. The 22 December performance will be a huge event with Sing Australia bringing a Hastings combined choir (Port Macquarie, Camden Haven & Wauchope) to Wauchope.

Conservation and/or Sustainable Farming Projects - Expressions of Interest Sought

Hastings Landcare Inc. is seeking landholders with an interest in carrying out biodiversity conservation activities and/ or implementing sustainable farming initiatives throughout the catchment. Actions that may be considered for funding include:

- Management of remnant vegetation and linking fragments by revegetation works to provide connectivity across the landscape;
- Fencing water bodies & habitat remnants to control grazing frequency, timing and intensity;
- Alternative watering systems to reduce impacts on water quality and habitat corridors;
- Invasive species control—weeds and feral animals—to promote resilience in biodiverse remnants.

Closing date for expressions of interest: 10 December. Contact Landcare, 44a Cameron Street, Wauchope 6586-4465

hastingslandcare@midcoast.com.au

Kid Spot

Here's an easy Christmas delight that kids can make – great Christmas presents for teachers!

Double Choc Strawberries

1 punnet washed strawberries, 1/2 cup dark chocolate, 1/4 cup white chocolate.

Place strawberries in fridge to chill. Melt dark and white chocolate separately. Dip strawberries in dark chocolate, 3/4 of the way up to the top of the chocolate. Put strawberries back in the fridge to solidify the chocolate. Dip the chilled choc strawberries into the white chocolate about 1cm up so it is just covering the strawberry tips. Serve chilled.



1. What do you call a sick crocodile?
An illigator.
2. Why do kangaroo mothers hate the wet weather?
Because the kids have to play indoors.
3. What do you call a chocolate covered sheep?
A chocolate baa."

 **Port Macquarie Acoustics**
Mel Gray-Thompson,
Audiologist
Over 30 years clinical practice
Your local independent Hearing Clinic
6583 9377
40 Table Street Port Macquarie

Wild Things
Native Gardens
 Kelly Benson &
James Mc Gahey
0409 846 952/ 0448 379 726
Bush regeneration and tree planting
Endemic tubestock supply
Project planning and grant application advice

 **Jamax Forest Solutions**
"We can see the forest through the trees!"
▲ native forest and plantation management
▲ harvest planning and supervision
▲ domestic and export sales and marketing
▲ private native forestry property vegetation planning
▲ bushfire prevention and mitigation
Steve 0427 990 317
www.jamaxforestsolutions.com

Mark Art
Painter & Decorator
Mark John Purdy
Quality Painting
30 years experience
Colour your home or business
179 Lemon Gum Rd Lic. no. 131908C
Pappinbarra 0421 046 851
NSW 2446 AH: 6585 6777

Regular Events

First Friday – **NO FIRST FRIDAY IN JANUARY**

When: First Friday of the month, 6pm onwards

Where: Hollisdale Hall

What: BYO drinks and nibbles, low cost BBQ including vegetarian and gluten free options, members' draw (cash prize) and raffle, 'Trading Table', table tennis, all ages welcome

Contact: Jean Hegarty 6585-6077

Yoga – **ENDS 8 DECEMBER & RESUMES 19 JANUARY**

When: Every Saturday morning, 8-9.30AM

Where: Hollisdale Hall

What: \$15 (mats are provided)

Contact: Amy Hubers stillpointyogamassage@gmail.com 6585-3470

Saturday Sing Along - **SUSPENDED UNTIL FURTHER NOTICE**

When: Second Saturday of every month, 10am -12md

Where: Hollisdale Hall

What: \$10 (\$5 of which goes to the PPA); morning tea (bring something delicious to share if the urge takes you)

Contact: Elly Franchimont 6587-6097 or 0424 220 937

www.vocalpointevents.com

Exercise Group – **NO MEETINGS DECEMBER & JANUARY, RESUMES FEBRUARY 2013**

When: Tuesday afternoons 1:30—2:30pm

Where: Hollisdale Hall

What: Equipment provided

Contact: Lyn Blythe 6587-6185 or Beverly Kilpatrick 6587-6112

PPA Matters

PPA Committee meetings – monthly at 6:30pm the Friday before First Friday – all welcome.

Facilities for Hire

Hollisdale Hall – contact Jan Childs 6587-6055. Upper Pappinbarra facilities and tennis court - contact Sue Frost 6587-6129

All Saints Church

Services are held **every fourth Sunday at 2 pm** with a cuppa 'off the back of the ute' around **2.45p.m.** All welcome.



PPA Membership now at 77

Can we reach 100? Membership is very important to us – not only does the small fee help with the many costs of keeping the Hall and Association alive, but good membership numbers help make us competitive for grants, the lifeblood of Hall maintenance and improvements. You can join the PPA at any time of year.

Pitchfork

Circulation

Pitchfork has hardcopy and email circulation of approximately 280. It comes out on the weekend **before** First Friday – **Friday, 31 January** for the **February** Issue. Material for the February Issue to the Editor by **Wednesday, 23 January**. We run both casual and regular **advertisements** at very competitive rates. Contact Chay Khamson.

Production Team

PPA Executive: Jan Childs janmary1301@bigpond.com 6587-6055

Editor: Bev Sibthorpe bsibthorpe@bigpond.com 6584-0051 or 6587-6075

Production: Angela Frost angfrost@hotmail.com

Advertising: Chay Khamson kwanchay@hotmail.com 6587-6022

The views expressed in *Pitchfork* are not necessarily those of the PPA.

Pappinbarra Progress Association Committee

Executive:

President: Jean Hegarty 6587-6077

Vice President: Mary Walker 6587-6055

Treasurer: Jan Childs 6587-6055

Secretary: Elly Franchimont 6587-6097

Other Members:

Kelly Benson Chay Khamson

Lyn Blythe Bev Sibthorpe

Sue Frost

PPA Membership 2012-2013

\$5 per adult

PLEASE PRINT

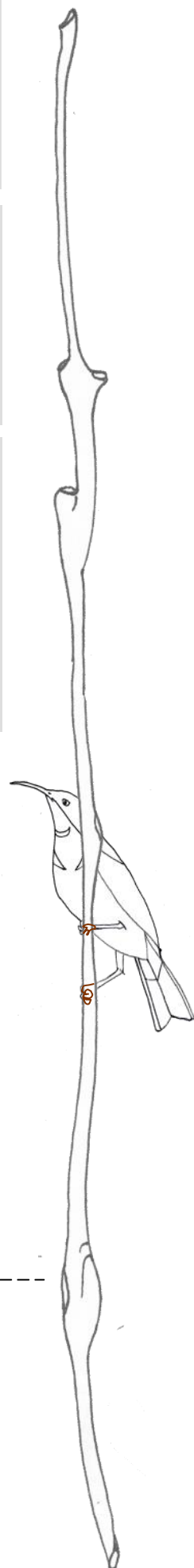
Member Names: _____

Address: _____

Email: _____ Phone: _____

Payment amount: _____

Send cash or cheque made out to "Pappinbarra Progress Association" to: Jan Childs, 1301 Pappinbarra Rd, Pappinbarra NSW 2446.



DECEMBER 2012

Mon	Tue	Wed	Thu	Fri	Sat	Sun
31 New Year's Eve 6:30pm					1	2
3	4	5	6 Tennis 7–10pm	7 Co-op Shareholder's day First Friday 6pm	8 Yoga 8am Co-op Shareholder's day Co-op Carols	9
10	11	12	13 Tennis 7–10pm	14	15	16
17	18	19	20	21	22 Farmers' Market 8am–12pm Christmas party Working Bee 10am Christmas Party 6pm Co-op Carols	23 All Saints Christmas Service 2pm Carols & BBQ 5pm
24	25 Merry Christmas! 	26	27	28	29	30

JANUARY 2013

Mon	Tue	Wed	Thu	Fri	Sat	Sun
	1 	2	3	4	5 Spider Project at the Glasshouse	6
7	8	9	10	11	12	13
14	15	16	17	18	19 Yoga 8am	20
21	22	23	24	25	26 Yoga 8am Farmers' Market 8am–12pm Australia Day 10am	27 All Saints Church 2pm
28	29	30	31			